

Capt. Curt's

Trawlers & Yachts LLC



<http://yachtworld.com/rpkays>

6807 Brookhaven Place
Bradenton, FL 34203, USA

Tel 941-730-0715

Fax 941-739-6556

Email captcurtstrawlers@verizon.net



46' Mariner Blue Sea PilotHouse World Cruiser

- Year: 2006
- **Current Price: US\$ 459,000** (12/05)
- Located in Factory,
- Hull Material: Fiberglass
- Engine/Fuel Type: Single Diesel
- YW# 12784-1305742

BASE PRICE: \$459,000 - Standard Single 270hp Diesel Engine. Optional Larger Engines Available. Does not include optional equipment, freight, bottom paint or dealer prep.

NEW MODEL for 2006!

Additional information, specifications and pictures coming soon.

Additional Specs, Equipment and Information:

Builder/Designer

Builder: Mariner

Dimensions

LOA: 46'5"

LWL: 40'9"

Beam: 15'

Displacement: 32,000 lbs. Draft: 4'

Tankage

Fuel: 600 gals.

Water: 300 gals.

BASE PRICE \$459,000 - Standard Single 270hp Diesel Engine - Optional Extra: Larger

engine(s) Available. DOES NOT INCLUDE OPTIONAL EQUIPMENT, FRIGHT, BOTTOM PAINT OR DEALER PREP. NEW MODEL FOR 2006! Additional information, and pictures coming soon. Call Capt. Curt Marsh for more details. CONSTRUCTION: Hand Laid-up molded fiberglass hull, deck, deck house and fly bridge. FRP Swim platform, FRP Bow pulpit. Non-skid Fiberglass decks.

- Standard Equipment:
- DECK,BRIDGE,COCKPIT & HULL
- Anchor Locker.
- Stainless steel bow rail.
- Type 316 stainless steel deck hardware.
- Vinyl upholstery on pilothouse seats.
- Flybridge seating with storage underneath.
- Fabric covered vertth mattresses.
- Carpets, except in galley & pilothouse where cabin sole is teak & holly.
- Interior teak varnished with satin finish.
- Companionway door.
- Port & starboard bulwark doors.
- Bow, stern and spring cleats.
- Cockpit storage.
- Compass.
- Electric air horn.
- Three 12-volt pantograph windshield wipers.
- International navigation lights.
- cockpit and bridge deck courtesy lights.
- FRP non-skid decks.
- FRP swim platform.
- Hardtop hatch & forward cabin hatches.
- Opening screened port in Staterooms & washrooms.
- Aluminum frame windows in pilothouse & salon.
- Solid laminate hull with vinylester resins in external layers and fitted with internal FRP grid.
- Aluminum cabin sole beams.
- Watertight engineroom bulkheads.
- Engineroom insulation.
- HELM:
- Two station Sea Star hydraulic steering.
- Two station Morse engine & transmission controls.
- Two instrument control centers.
- Flybridge stainless steel wheel and custom wheel lower helm.
- MECHANICAL EQUIPMENT:
- STANDARD ENGINE: 270-HP DIESEL.
- Engine options available.
- Freshwater engine cooling.
- Fuel lines U.S. Coast Guard approved flexible hose.
- Racor fuel filter.
- Engine alarm system.
- Fabricated steel engine mount saddles.
- Four molded FRP 150-gallon fuel tanks.
- Stainless steel propeller
- shaft(s).
- Stuffing box: PYI Dripless or equivalent.
- Bronze Propellers.
- Full Keel, stainless steel rudder, rudder shoe with single engine.
- Stainless steel rudders.
- 7-KW or greater diesel Genset.
- Manual bilge pump.
- Bronze sea strainer.
- Seacocks on underwater thru-hull fittings.
- HEAD:
- Electric Toilets in master and guest heads.
- Two 30-gallon toilet holding tanks with both deck pump-out & gravity drain.
- Separate shower stall.
- Shower sump pump.
- Built-in vanity.
- Mirror.
- FITTINGS:
- Southco Door hardware.
- Manship 24-inch x 24-inch stainless steel hatches.
- Manship stainless steel port holes.

Galley

- Standard Equipment:
- Microwave oven.
- Three burner electric cook top range.
- Norcold or equivalent AC/DC refrigerator with freezer.
- Sink with designer faucet.
- Pressurized water system with marine water heater.
- Stainless steel 300-gallon water tanks.
- Cabinets.
- Formica Counter tops.

Navigation and Electronics

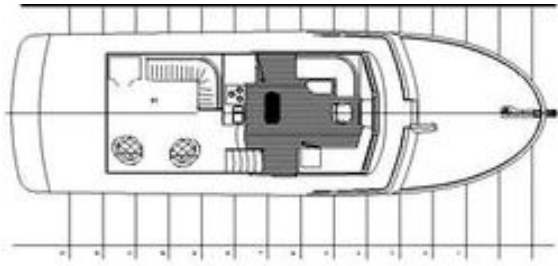
EXTRA OPTIONAL EQUIPMENT: WILL CUSTOMIZE TO CAPTAINS SPECIFICATIONS

Electrical System

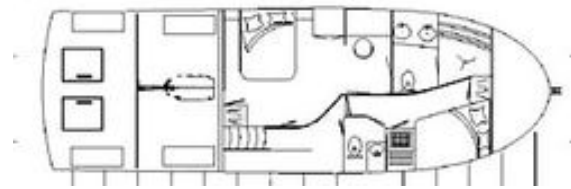
- STANDARD EQUIPMENT:
- Marincor shore power inlet with 50-amp rating.
- Main circuit breaker panel with volt & ammeters for 12v DC and 120-v AC.
- Color-coded wiring harness.
- 12v electrical outlets in saloon & bridge.
- 110-volt electrical outlets.
- 12v electric lights: 8-main salon with switch next to aft door., 2-forward cabin, under berth lighting, 1-head, 1-shower, 6-engine room, 1-aft deck, 2-lazarette.
- GFCI protection.
- Six heavy duty 12-v batteries with selector switch.
- Battery Charger.
- Two electric bilge pumps with automatic float switches.
- Automatic 12-volt shower sump pumps.
- Bonding systems with zinc anode.

Disclaimer

The Company offers the details of this vessel in good faith but cannot guarantee or warrant the accuracy of this information nor warrant the condition of the vessel. A buyer should instruct his agents, or his surveyors, to investigate such details as the buyer desires validated. This vessel is offered subject to prior sale, price change, or withdrawal without notice.



Pilothouse-Salon Level



Lower Level

